

Re-Connecting Canada, Perched Culvert Outlet Fix

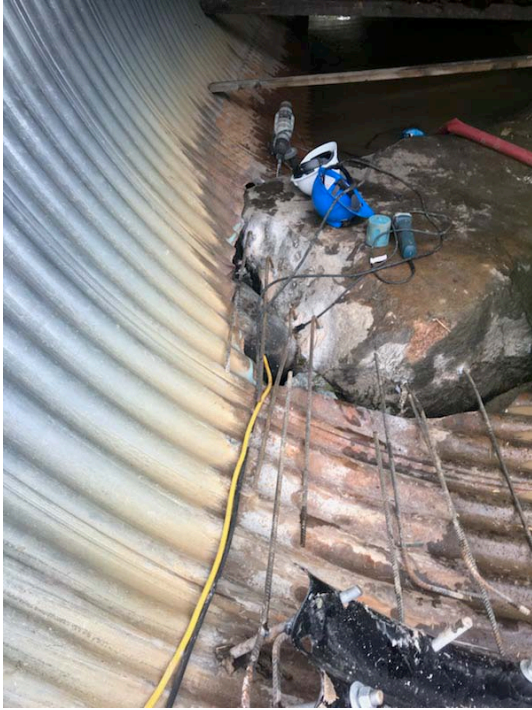
Not all culverts are installed properly. A perched culvert, on a stream tributary, will destroy connectivity making fish spawning impossible. Sadly there are thousands of these installations across Canada.



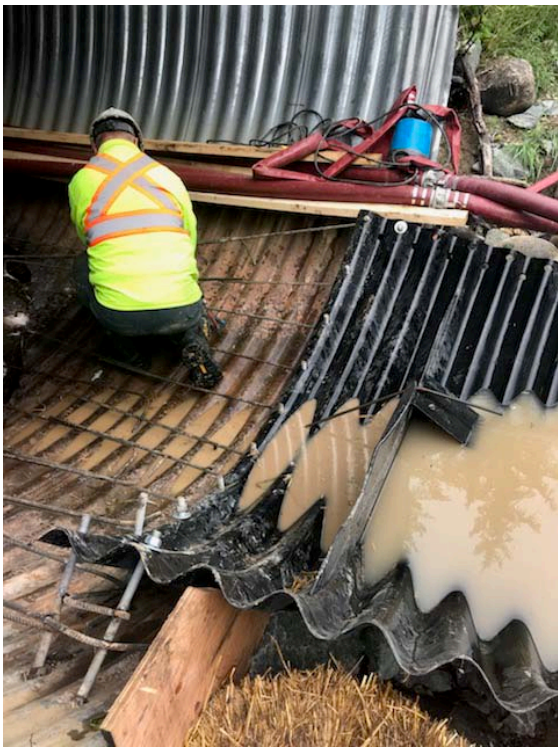
On this project a 3600mm diameter CSP was set on top of a rock outcropping. A hole was cut in the pipe to accommodate the rock. As a result there was a 400mm drop through 3.5 meters of rock rubble. The stream disappeared and fish passage in both directions was eliminated.



The solution was to attach a FISHCULVERT Flume to the end of the culvert, connecting the upper and lower stream for fish passage.



The culvert was dewatered in order to expose the damaged CSP invert. A dewatering and construction plan was registered with DFO to ensure that no fish would be harmed.



The FISHCULVERT Flume was attached to the CSP as was reinforcing steel for the invert repair.



The damaged invert was repaired and the FISHCULVERT connection was sealed.



The flume was secured below the culvert with steel posts and rip rap.



As the coffer dam was removed the FISCULVERT Flume ran full for a few hours. The stream is re-connected and fish are able to navigate again.

Fishculvert

www.fishculvert.com

www.couloirpoisson.com